

**Soprano**

Musical notation for the Soprano voice part. It consists of a single staff in treble clef with a key signature of three flats (B-flat, E-flat, A-flat) and a time signature of 2/4. The melody begins with a quarter rest, followed by a quarter note G4, a quarter note A4, a quarter note B4, and a quarter note C5. This is followed by a half note G4. The second measure contains a quarter note G4, a quarter note A4, a quarter note B4, and a quarter note C5. The third measure contains a half note G4. The fourth measure contains a quarter note G4, a quarter note A4, a quarter note B4, and a quarter note C5. The fifth measure contains a half note G4. The lyrics "Di- ri rin din din..." are written below the notes, with "Di- ri rin din" under the first four notes and "din..." under the half notes.

Di- ri rin din din...

**Alto**

Musical notation for the Alto voice part. It consists of a single staff in treble clef with a key signature of three flats and a time signature of 2/4. The melody is identical to the Soprano part. The lyrics "Di- ri rin din din..." are written below the notes.

Di- ri rin din din...

**Tenor**

Musical notation for the Tenor voice part. It consists of a single staff in treble clef with a key signature of three flats and a time signature of 2/4. The melody begins with a whole rest. The second measure contains a quarter note G4, a quarter note A4, a quarter note B4, and a quarter note C5. This is followed by a half note G4. The third measure contains a quarter note G4, a quarter note A4, a quarter note B4, and a quarter note C5. The fourth measure contains a half note G4. The lyrics "Di- ri rin din din..." are written below the notes, with "Di- ri rin din" under the second measure and "din..." under the half notes.

Di- ri rin din din...

**Bass**

Musical notation for the Bass voice part. It consists of a single staff in bass clef with a key signature of three flats and a time signature of 2/4. The melody begins with a whole rest. The second measure contains a quarter note G3, a quarter note A3, a quarter note B3, and a quarter note C4. This is followed by a half note G3. The third measure contains a quarter note G3, a quarter note A3, a quarter note B3, and a quarter note C4. The fourth measure contains a half note G3. The lyrics "Di- ri rin din din..." are written below the notes, with "Di- ri rin din" under the second measure and "din..." under the half notes.

Di- ri rin din din...

**Soprano**

5

Di- ri rin din din... din din din

Detailed description: This block shows the Soprano part of a musical score for measures 5 through 9. The staff is in treble clef with a key signature of two flats (B-flat and E-flat). Measure 5 begins with a treble clef, a key signature change to two flats, and a fermata over a whole note. The lyrics 'Di- ri rin din' are written below the notes. Measures 6 and 7 each contain a whole note with the lyrics 'din...'. Measures 8 and 9 each contain a whole note with the lyrics 'din'.

**Alto**

Di- ri rin din din... din din din

Detailed description: This block shows the Alto part of a musical score for measures 5 through 9. The staff is in treble clef with a key signature of two flats. Measure 5 begins with a treble clef, a key signature change to two flats, and a fermata over a whole note. The lyrics 'Di- ri rin din' are written below the notes. Measures 6 and 7 each contain a whole note with the lyrics 'din...'. Measures 8 and 9 each contain a whole note with the lyrics 'din'.

**Tenor**

din... Di- ri rin din din... Di- ri rin din

Detailed description: This block shows the Tenor part of a musical score for measures 5 through 9. The staff is in treble clef with a key signature of two flats. Measure 5 contains a whole note with the lyrics 'din...'. A slur connects this note to the first note of measure 6. Measure 6 contains a quarter-note triplet with the lyrics 'Di- ri rin din'. Measure 7 contains a quarter-note triplet with the lyrics 'din... Di- ri rin din'. Measures 8 and 9 each contain a quarter-note triplet with the lyrics 'din... Di- ri rin din'.

**Bass**

din... Di- ri rin din din... Di- ri rin din

Detailed description: This block shows the Bass part of a musical score for measures 5 through 9. The staff is in bass clef with a key signature of two flats. Measure 5 contains a whole note with the lyrics 'din...'. A slur connects this note to the first note of measure 6. Measure 6 contains a quarter-note triplet with the lyrics 'Di- ri rin din'. Measure 7 contains a quarter-note triplet with the lyrics 'din... Di- ri rin din'. Measures 8 and 9 each contain a quarter-note triplet with the lyrics 'din... Di- ri rin din'.

8

**Soprano**

**Alto**

**Tenor**

**Bass**

**din... Di- ri rin din din...**

**din... Di- ri rin din din...**

**din... \ Di- ri rin din din... Di- ri rin din**

**din... \ Di- ri rin din din... Di- ri rin din**

Detailed description: This image shows a musical score for four voices: Soprano, Alto, Tenor, and Bass. The score is divided into three measures. The Soprano and Alto parts are in treble clef with a key signature of two flats (B-flat and E-flat). The Tenor part is also in treble clef with the same key signature. The Bass part is in bass clef with the same key signature. The lyrics are: 'din...' (measure 8), 'Di- ri rin din' (measure 9), and 'din...' (measure 10). The Soprano and Alto parts have a melodic line in measure 9 consisting of four eighth notes: G4, A4, B-flat4, and A4. The Tenor part has a melodic line in measure 8 consisting of four eighth notes: G3, A3, B-flat3, and A3. The Bass part has a melodic line in measure 8 consisting of four eighth notes: G2, A2, B-flat2, and A2. The lyrics are written below the notes, with some parts in bold. The Soprano and Alto parts have a long note in measure 10, while the Tenor and Bass parts have a melodic line in measure 10 consisting of four eighth notes: G3, A3, B-flat3, and A3.

Soprano

Di-ri rin din din... Di-ri rin din din... din

Alto

Di-ri rin din din... Di-ri rin din din... din

Tenor

din... Di-ri rin din din... Di-ri rin din

Bass

din... Di-ri rin din din... Di-ri rin din

Soprano

Musical notation for Soprano voice part, measures 15-18. The staff is in treble clef with a key signature of three flats. The melody consists of quarter notes in measures 15 and 16, followed by a half note in measure 17, and a series of eighth notes in measure 18. A slur covers the half note in measure 17 and the first eighth note in measure 18.

din      din      din...      E co-m'e'    bel-    la

Alto

Musical notation for Alto voice part, measures 15-18. The staff is in treble clef with a key signature of three flats. The melody consists of quarter notes in measures 15 and 16, followed by a half note in measure 17, and a series of eighth notes in measure 18. A slur covers the half note in measure 17 and the first eighth note in measure 18.

din      din      din...      E co-m'e'    bel-    la

Tenor

Musical notation for Tenor voice part, measures 15-18. The staff is in treble clef with a key signature of three flats. The melody consists of eighth notes in measures 15 and 16, followed by eighth notes in measure 17, and quarter notes in measure 18. There are fermatas over the final notes of measures 17 and 18.

din... Di-ri rin din      din... Di-ri rin din      din...      E co-m'e'

Bass

Musical notation for Bass voice part, measures 15-18. The staff is in bass clef with a key signature of three flats. The melody consists of eighth notes in measures 15 and 16, followed by eighth notes in measure 17, and quarter notes in measure 18. There are fermatas over the final notes of measures 17 and 18.

din... Di-ri rin din      din... Di-ri rin din      din...      E co-m'e'

Soprano

l'u- va fo- ga- ri- na e co- m'e' bel- lo sa-

Alto

l'u- va fo- ga- ri- na e co- m'e' bel- lo sa-

Tenor

bel- la l'u- va fo- ga- ri- na e co- m'e'

Bass

bel- la l'u- va fo- ga- ri- na e co- m'e'

Soprano

per- la ven- dem- miar a far

Alto

per- re ven- dem- mia- re, ven- dem- miar a far

Tenor

bel- lo, bel- lo ven- dem- miar a far l'a- mor- con

Bass

bel- lo, ven- dem- miar l'a- mor- con

27

Soprano

Musical staff for Soprano voice. The staff contains a treble clef, a key signature of three flats (B-flat, E-flat, A-flat), and a common time signature. The melody consists of a half note followed by a quarter note, then a pair of eighth notes, a pair of quarter notes, a pair of eighth notes, a pair of quarter notes, and a half note. A slur is placed under the final two notes.

l'a- mor a far l'a- mor, l'a- mo-re in mez- zo ai pra'

Alto

Musical staff for Alto voice. The staff contains a treble clef, a key signature of three flats, and a common time signature. The melody consists of a half note, a pair of eighth notes, a pair of quarter notes, a quarter note, a pair of eighth notes, a pair of quarter notes, a pair of eighth notes, a pair of quarter notes, and a half note. A slur is placed under the final two notes.

l'a- mor a far l'a- mor, l'a- mo-re in mez- zo ai pra'

Tenor

Musical staff for Tenor voice. The staff contains a treble clef, a key signature of three flats, and a common time signature. The melody consists of a pair of eighth notes, a pair of quarter notes, a pair of eighth notes, a pair of quarter notes, a pair of eighth notes, a pair of quarter notes, a pair of eighth notes, a pair of quarter notes, a pair of eighth notes, a pair of quarter notes, and a half note. A slur is placed over the first four notes.

la mia bel- la a far l'a- mo-re in mez- zo ai pra'

Bass

Musical staff for Bass voice. The staff contains a bass clef, a key signature of three flats, and a common time signature. The melody consists of a pair of eighth notes, a pair of quarter notes, a pair of eighth notes, a pair of quarter notes, a pair of eighth notes, a pair of quarter notes, a pair of eighth notes, a pair of quarter notes, a pair of eighth notes, a pair of quarter notes, and a pair of eighth notes.

la mia bel- la a far l'a- mo-re in mez- zo ai pra' ai



Soprano

Di rin rin din din... Di-ri rin din din...

Alto

Di rin rin din din... Di-ri rin din din...

Tenor

Di-ri rin din din... Di-ri rindin

Bass

pra' Di-ri rin din din... Di-ri rindin

Soprano

Di- ri rin din din... din din din

The Soprano staff begins with a treble clef, a key signature of two flats (B-flat and E-flat), and a common time signature. The first measure contains a whole note chord of B-flat and E-flat. The second measure contains a half note chord of B-flat and E-flat. The third measure contains a quarter note chord of B-flat and E-flat. The fourth measure contains a quarter note chord of B-flat and E-flat. The fifth measure contains a quarter note chord of B-flat and E-flat. The sixth measure contains a quarter note chord of B-flat and E-flat. The seventh measure contains a quarter note chord of B-flat and E-flat. The eighth measure contains a quarter note chord of B-flat and E-flat. The lyrics are: Di- ri rin din din... din din din.

Alto

Di- ri rin din din... din din din

The Alto staff begins with a treble clef, a key signature of two flats (B-flat and E-flat), and a common time signature. The first measure contains a whole note chord of B-flat and E-flat. The second measure contains a half note chord of B-flat and E-flat. The third measure contains a quarter note chord of B-flat and E-flat. The fourth measure contains a quarter note chord of B-flat and E-flat. The fifth measure contains a quarter note chord of B-flat and E-flat. The sixth measure contains a quarter note chord of B-flat and E-flat. The seventh measure contains a quarter note chord of B-flat and E-flat. The eighth measure contains a quarter note chord of B-flat and E-flat. The lyrics are: Di- ri rin din din... din din din.

Tenor

din... Di- ri rin din din... Di- ri rin din

The Tenor staff begins with a treble clef, a key signature of two flats (B-flat and E-flat), and a common time signature. The first measure contains a whole note chord of B-flat and E-flat. The second measure contains a half note chord of B-flat and E-flat. The third measure contains a quarter note chord of B-flat and E-flat. The fourth measure contains a quarter note chord of B-flat and E-flat. The fifth measure contains a quarter note chord of B-flat and E-flat. The sixth measure contains a quarter note chord of B-flat and E-flat. The seventh measure contains a quarter note chord of B-flat and E-flat. The eighth measure contains a quarter note chord of B-flat and E-flat. The lyrics are: din... Di- ri rin din din... Di- ri rin din.

Bass

din... Di- ri rin din din... Di- ri rin din

The Bass staff begins with a bass clef, a key signature of two flats (B-flat and E-flat), and a common time signature. The first measure contains a whole note chord of B-flat and E-flat. The second measure contains a half note chord of B-flat and E-flat. The third measure contains a quarter note chord of B-flat and E-flat. The fourth measure contains a quarter note chord of B-flat and E-flat. The fifth measure contains a quarter note chord of B-flat and E-flat. The sixth measure contains a quarter note chord of B-flat and E-flat. The seventh measure contains a quarter note chord of B-flat and E-flat. The eighth measure contains a quarter note chord of B-flat and E-flat. The lyrics are: din... Di- ri rin din din... Di- ri rin din.

40

Soprano

Musical staff for Soprano voice part. It begins with a treble clef, a key signature of two flats (B-flat and E-flat), and a common time signature. The first measure contains a half note G4 with a fermata. The second measure contains a quarter note G4, a quarter note A4, a quarter note B4, and a quarter note G4, all beamed together. The third measure contains a half note G4 with a fermata.

din...

Di- ri rin din

din...

Alto

Musical staff for Alto voice part. It begins with a treble clef, a key signature of two flats (B-flat and E-flat), and a common time signature. The first measure contains a half note G4 with a fermata. The second measure contains a quarter note G4, a quarter note A4, a quarter note B4, and a quarter note G4, all beamed together. The third measure contains a half note G4 with a fermata.

din...

Di- ri rin din

din...

Tenor

Musical staff for Tenor voice part. It begins with a treble clef, a key signature of two flats (B-flat and E-flat), and a common time signature. The first measure contains a quarter note G3, a quarter note A3, a quarter note B3, and a quarter note G3, all beamed together. The second measure contains a half note G3 with a fermata. The third measure contains a quarter note G3, a quarter note A3, a quarter note B3, and a quarter note G3, all beamed together.

din... \ Di- ri rin din

din...

Di- ri rin din

Bass

Musical staff for Bass voice part. It begins with a bass clef, a key signature of two flats (B-flat and E-flat), and a common time signature. The first measure contains a quarter note G2, a quarter note A2, a quarter note B2, and a quarter note G2, all beamed together. The second measure contains a half note G2 with a fermata. The third measure contains a quarter note G2, a quarter note A2, a quarter note B2, and a quarter note G2, all beamed together.

din... \ Di- ri rin din

din...

Di- ri rin din

Soprano

Di-ri rin din din... Di-ri rin din din... din

The Soprano part is written on a treble clef staff with a key signature of two flats (Bb, Eb). It begins with a whole note 'din...' in the first measure. The second measure contains a quarter-note triplet 'Di-ri rin' followed by a quarter note 'din'. The third measure is a whole note 'din...'. The fourth measure contains another quarter-note triplet 'Di-ri rin' followed by a quarter note 'din'. The fifth measure is a whole note 'din...'. The sixth measure contains a quarter-note triplet 'Di-ri rin' followed by a quarter note 'din'. The seventh measure is a whole note 'din'. The eighth measure is a whole note 'din'. A slur covers the first two measures, and another slur covers the last two measures.

Alto

Di-ri rin din din... Di-ri rin din din... din

The Alto part is written on a treble clef staff with a key signature of two flats (Bb, Eb). It begins with a quarter-note triplet 'Di-ri rin' followed by a quarter note 'din'. The second measure is a whole note 'din...'. The third measure contains another quarter-note triplet 'Di-ri rin' followed by a quarter note 'din'. The fourth measure is a whole note 'din...'. The fifth measure contains a quarter-note triplet 'Di-ri rin' followed by a quarter note 'din'. The sixth measure is a whole note 'din'. The seventh measure is a whole note 'din'. A slur covers the first two measures, and another slur covers the last two measures.

Tenor

din... Di-ri rin din din... Di-ri rin din

The Tenor part is written on a treble clef staff with a key signature of two flats (Bb, Eb). It begins with a whole note 'din...'. The second measure contains a quarter-note triplet 'Di-ri rin' followed by a quarter note 'din'. The third measure is a whole note 'din...'. The fourth measure contains another quarter-note triplet 'Di-ri rin' followed by a quarter note 'din'. The fifth measure is a whole note 'din...'. The sixth measure contains a quarter-note triplet 'Di-ri rin' followed by a quarter note 'din'. The seventh measure is a whole note 'din...'. The eighth measure contains another quarter-note triplet 'Di-ri rin' followed by a quarter note 'din'. A slur covers the first two measures, and another slur covers the last two measures.

Bass

din... Di-ri rin din din... Di-ri rin din

The Bass part is written on a bass clef staff with a key signature of two flats (Bb, Eb). It begins with a whole note 'din...'. The second measure contains a quarter-note triplet 'Di-ri rin' followed by a quarter note 'din'. The third measure is a whole note 'din...'. The fourth measure contains another quarter-note triplet 'Di-ri rin' followed by a quarter note 'din'. The fifth measure is a whole note 'din...'. The sixth measure contains a quarter-note triplet 'Di-ri rin' followed by a quarter note 'din'. The seventh measure is a whole note 'din...'. The eighth measure contains another quarter-note triplet 'Di-ri rin' followed by a quarter note 'din'. A slur covers the first two measures, and another slur covers the last two measures.

Soprano

Musical notation for Soprano voice part, measures 47-50. The staff is in treble clef with a key signature of three flats (B-flat, E-flat, A-flat). The melody consists of quarter notes in measures 47 and 48, followed by a half note in measure 49, and a quarter note in measure 50. A slur covers the half note in measure 49 and the quarter note in measure 50. The lyrics are: **din din din... E co-m'e' bel- la**

Alto

Musical notation for Alto voice part, measures 47-50. The staff is in treble clef with a key signature of three flats (B-flat, E-flat, A-flat). The melody consists of quarter notes in measures 47 and 48, followed by a half note in measure 49, and a quarter note in measure 50. A slur covers the half note in measure 49 and the quarter note in measure 50. The lyrics are: **din din din... E co-m'e' bel- la**

Tenor

Musical notation for Tenor voice part, measures 47-50. The staff is in treble clef with a key signature of three flats (B-flat, E-flat, A-flat). The melody consists of eighth notes in measures 47 and 48, followed by eighth notes in measure 49, and a quarter note in measure 50. The lyrics are: **din... Di-ri rin din din... Di-ri rin din din... E co-m'e'**

Bass

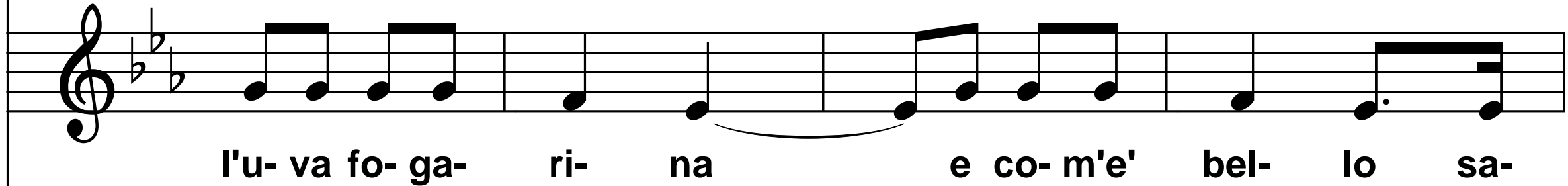
Musical notation for Bass voice part, measures 47-50. The staff is in bass clef with a key signature of three flats (B-flat, E-flat, A-flat). The melody consists of eighth notes in measures 47 and 48, followed by eighth notes in measure 49, and a quarter note in measure 50. The lyrics are: **din... Di-ri rin din din... Di-ri rin din din... E co-m'e'**

Soprano



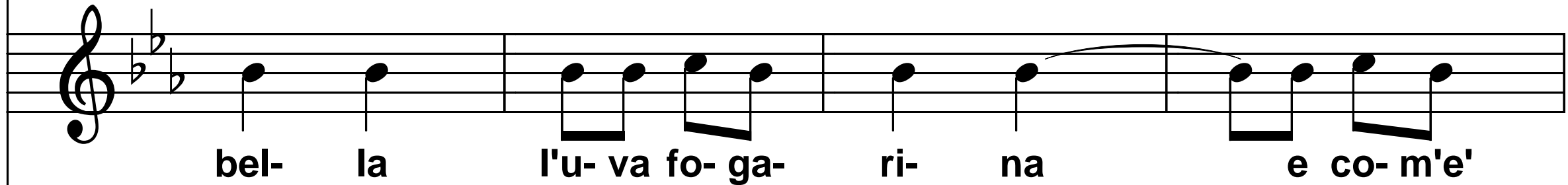
l'u- va fo- ga- ri- na e co- m'e' bel- lo sa-

Alto



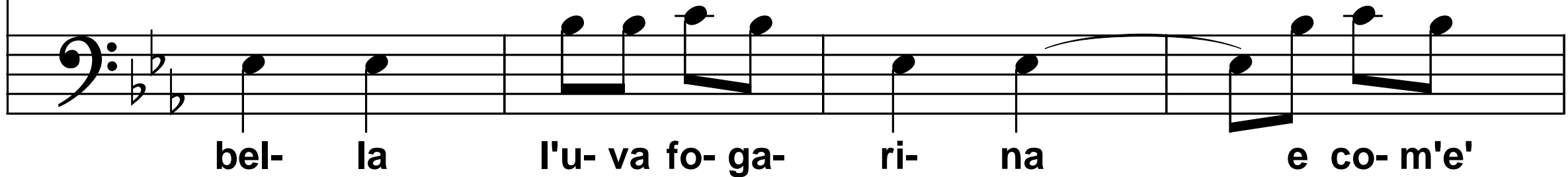
l'u- va fo- ga- ri- na e co- m'e' bel- lo sa-

Tenor



bel- la l'u- va fo- ga- ri- na e co- m'e'

Bass



bel- la l'u- va fo- ga- ri- na e co- m'e'

Soprano

per- la ven- dem- miar a far

Alto

per- re ven- dem- mia- re, ven- dem- miar a far

Tenor

bel- lo, bel- lo ven- dem- miar a far l'a- mor- con

Bass

bel- lo, ven- dem- miar l'a- mor- con

Soprano

Musical staff for Soprano voice. The staff contains a treble clef, a key signature of three flats (B-flat, E-flat, A-flat), and a common time signature. The melody consists of the following notes: a half note G4, a quarter note A4, a quarter note B4, a quarter note C5, a quarter note B4, a quarter note A4, a quarter note G4, a quarter note F4, a quarter note E4, and a half note D4.

**l'a- mor a far l'a- mor, l'a- mo-re in mez- zo ai pra'**

Alto

Musical staff for Alto voice. The staff contains a treble clef, a key signature of three flats (B-flat, E-flat, A-flat), and a common time signature. The melody consists of the following notes: a half note G4, a quarter note A4, a quarter note B4, a quarter note C5, a quarter note B4, a quarter note A4, a quarter note G4, a quarter note F4, a quarter note E4, and a half note D4.

**l'a- mor a far l'a- mor, l'a- mo-re in mez- zo ai pra'**

Tenor

Musical staff for Tenor voice. The staff contains a treble clef, a key signature of three flats (B-flat, E-flat, A-flat), and a common time signature. The melody consists of the following notes: a quarter note G4, a quarter note A4, a quarter note B4, a quarter note C5, a quarter note B4, a quarter note A4, a quarter note G4, a quarter note F4, a quarter note E4, a quarter note D4, a quarter note C4, a quarter note B3, a quarter note A3, a quarter note G3, and a half note F3.

**la mia bel- la a far l'a- mo-re in mez- zo ai pra\**

Bass

Musical staff for Bass voice. The staff contains a bass clef, a key signature of three flats (B-flat, E-flat, A-flat), and a common time signature. The melody consists of the following notes: a quarter note G3, a quarter note A3, a quarter note B3, a quarter note C4, a quarter note B3, a quarter note A3, a quarter note G3, a quarter note F3, a quarter note E3, a quarter note D3, a quarter note C3, a quarter note B2, a quarter note A2, and a half note G2.

**la mia bel- la a far l'a- mo-re in mez- zo ai pra' ai**



Soprano

il sol de

Alto

Fi- lar la 'n vol fi- lar, cu- sir non la sa far, il

Tenor

il sol de

Bass

pra'\ Fi- lar la 'n vol fi- lar Cu-

70

**Soprano**

la cam- pa- gna,

**Alto**

sol de la cam- pa- gna, il sol de la cam- pa- gna, Fi-

**Tenor**

la cam- pa- gna,

**Bass**

sir non sa, non la sa far

74

Soprano

il sol de la

Alto

lar la 'n vol fi- lar, cu- sir non la sa far, il sol de la cam-

Tenor

il sol de la

Bass

Fi- lar la 'n vol fi- lar, il sol la

Soprano

Musical notation for the Soprano part, measures 79-83. The staff is in treble clef with a key signature of two flats (B-flat and E-flat). The melody consists of quarter and eighth notes.

cam- pa- gna. Te- re- si- na in- bri- a-

Alto

Musical notation for the Alto part, measures 79-83. The staff is in treble clef with a key signature of two flats. The melody includes quarter, eighth, and sixteenth notes.

pa- gna, la dis che'l ghe fa mal. Te- re- si- na in- bri- a-

Tenor

Musical notation for the Tenor part, measures 79-83. The staff is in treble clef with a key signature of two flats. The melody consists of quarter and eighth notes.

cam- pa- gna. Te- re- si- na in- bri- a-

Bass

Musical notation for the Bass part, measures 79-83. The staff is in bass clef with a key signature of two flats. The melody consists of quarter and eighth notes.

dis che'l ghe fa mal\ Te- re- si- na in- bri- a-

Soprano



gu- na po- ca vo- ja d'la- vu- rar la s'e' to- ta u- na ves-

Alto



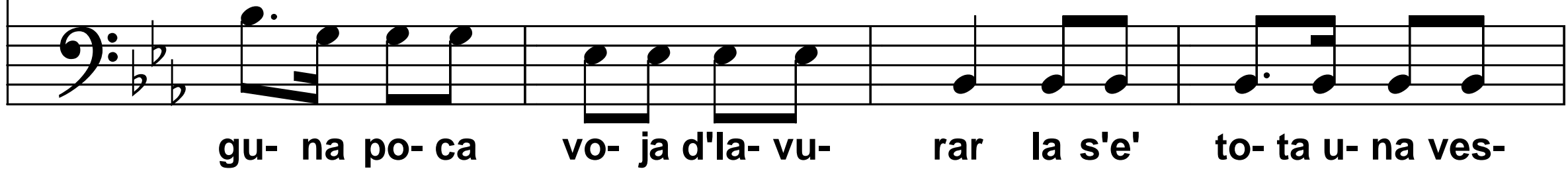
gu- na po- ca vo- ja d'la- vu- rar la s'e' to- ta u- na ves-

Tenor



gu- na po- ca vo- ja d'la- vu- rar la s'e' to- ta u- na ves-

Bass



gu- na po- ca vo- ja d'la- vu- rar la s'e' to- ta u- na ves-

Soprano

ta- glia la gh'an- co- ra da pa- gar. E non va piu' a

Alto

ta- glia la gh'an- co- ra da pa- gar.\ E non va piu' a

Tenor

ta- glia la gh'an- co- ra da pa- gar.\ E non a

Bass

ta- glia la gh'an- co- ra da pa- gar.\ E non a

Soprano

me-si nem- me- no a set-ti- ma- ne, la va a po-che

Alto

me-si nem- me- no a set-ti- ma- ne, la va a po-che

Tenor

me-si la va..nem- me-no a set-ti- ma- ne, la va... la va a po-che

Bass

me-si la va..nem- me-no a set-ti- ma- ne, la va... \ a po- che

Soprano

o- re, la va a po- che o- re, E non va piu' a

Alto

o- re, la va a po- che o- re, E non va piu' a

Tenor

o- re, a po- che o- re, la va... \ E non a

Bass

o- re, la va... a po- che o- re, la va... \ E non a



Soprano



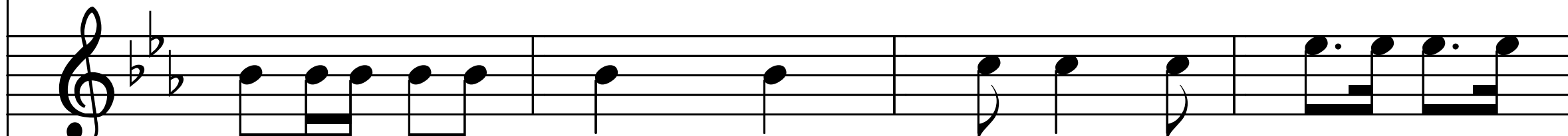
me- si nem- me- no a set- ti- ma- ne, la va a po- che

Alto



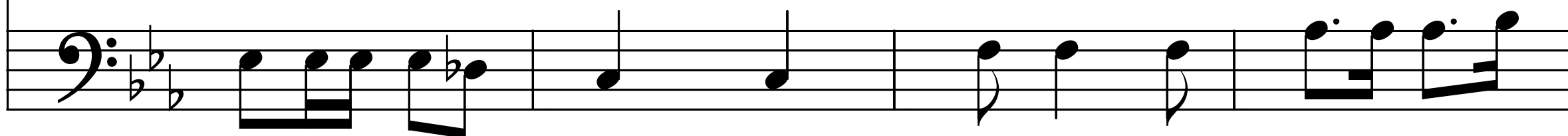
me- si nem- me- no a set- ti- ma- ne, la va a po- che

Tenor



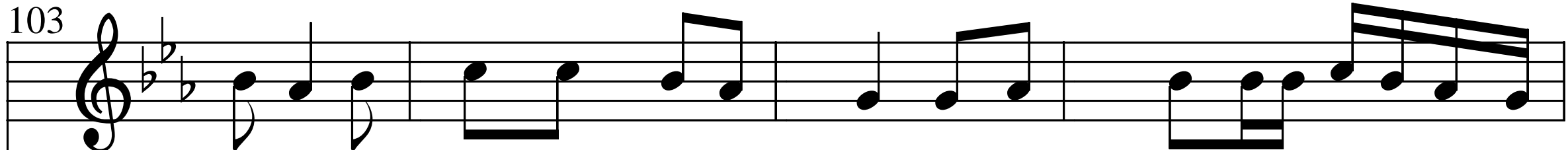
me- si la va.. a set- ti- ma- ne, la va... a po- che

Bass



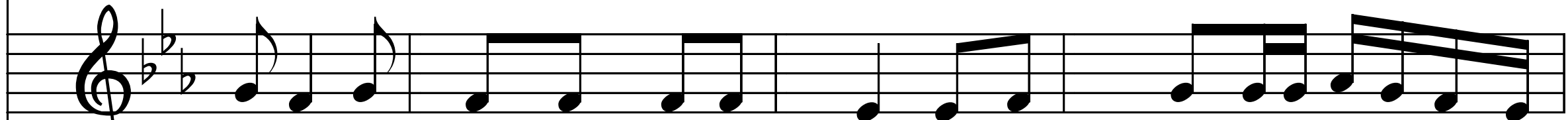
me- si la va.. a set- ti- ma- ne, la va... a po- che

Soprano




o- re, e do-po an-dum a ca'! Siur pa- drun da li be- li bra-ghi

Alto



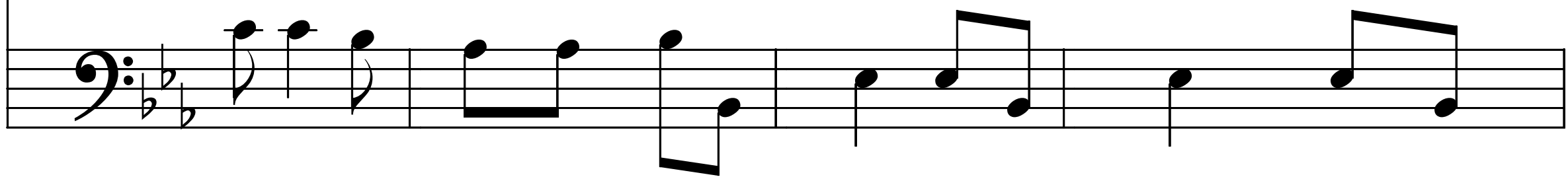
o- re, e do-po an-dum a ca'! Siur pa- drun da li be- li bra-ghi

Tenor



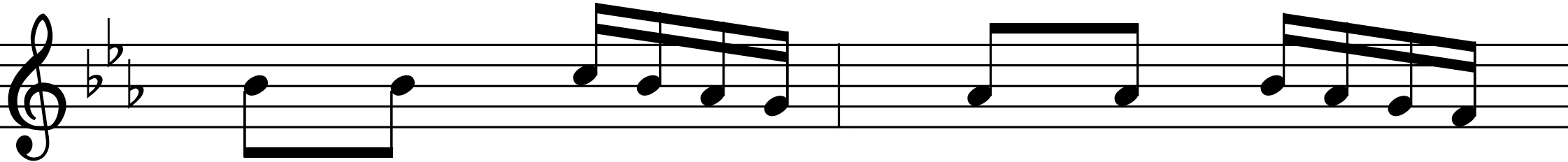
o- re, e do-po an-dum a ca'! Siur pa- drun da li

Bass



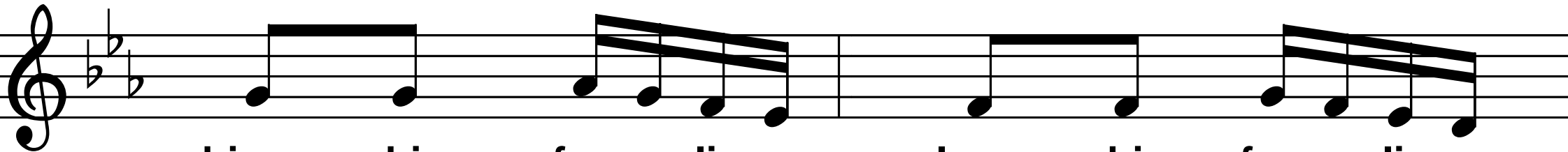
o- re, e do-po an-dum a ca'! Siur pa- drun... Siur pa-

Soprano



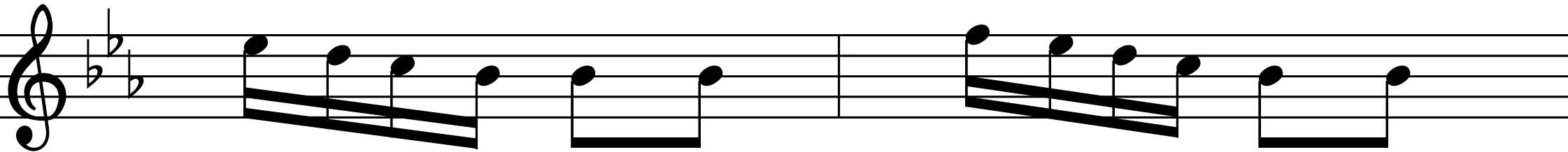
bian- chi, fo- ra li pa- lan- chi, fo- ra li pa-

Alto



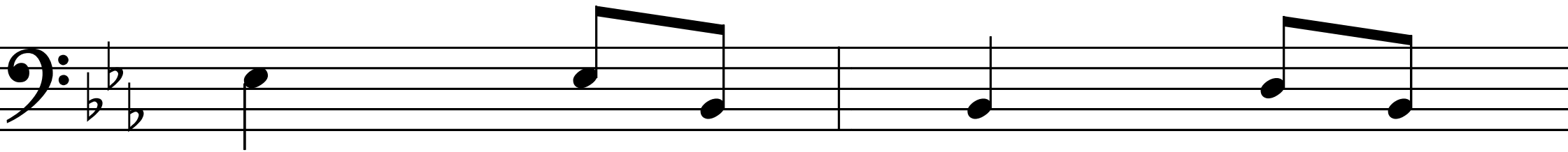
bian- chi, fo- ra li pa- lan- chi, fo- ra li pa-

Tenor



be- li bra- ghi bian- chi, fo- ra li pa- lan- chi,

Bass



drun... Siur pa- drun... Siur pa-

Soprano

lan- chi. Siur pa- drun da li be- li bra- ghi

Alto

lan- chi. Siur pa- drun da li be- li bra- ghi

Tenor

fo- ra li pa- lan- chi. Siur pa- drun da li

Bass

drun... Siur pa- drun... Siur pa-

Soprano

bian- chi, fo- ra li pa- lan- chica'n- du- m a ca! fo- ra

Alto

bian- chi, fo- ra li pa- lan- chica'n- du- m a ca! fo- ra

Tenor

be- li bra- ghi,,, fo- ra li pa- lan- chica'n- du- m a ca!

Bass

drun... \ fo- ra li pa- lan- chica'n- du- m a ca!

Soprano

li pa- lan- chi ca'n- du- m a ca'!\

Alto

li pa- lan- chi ca'n- du- m a ca'!\

Tenor

ca'n- du- m a ca'!\

Bass

ca'n- du- m a ca'!\